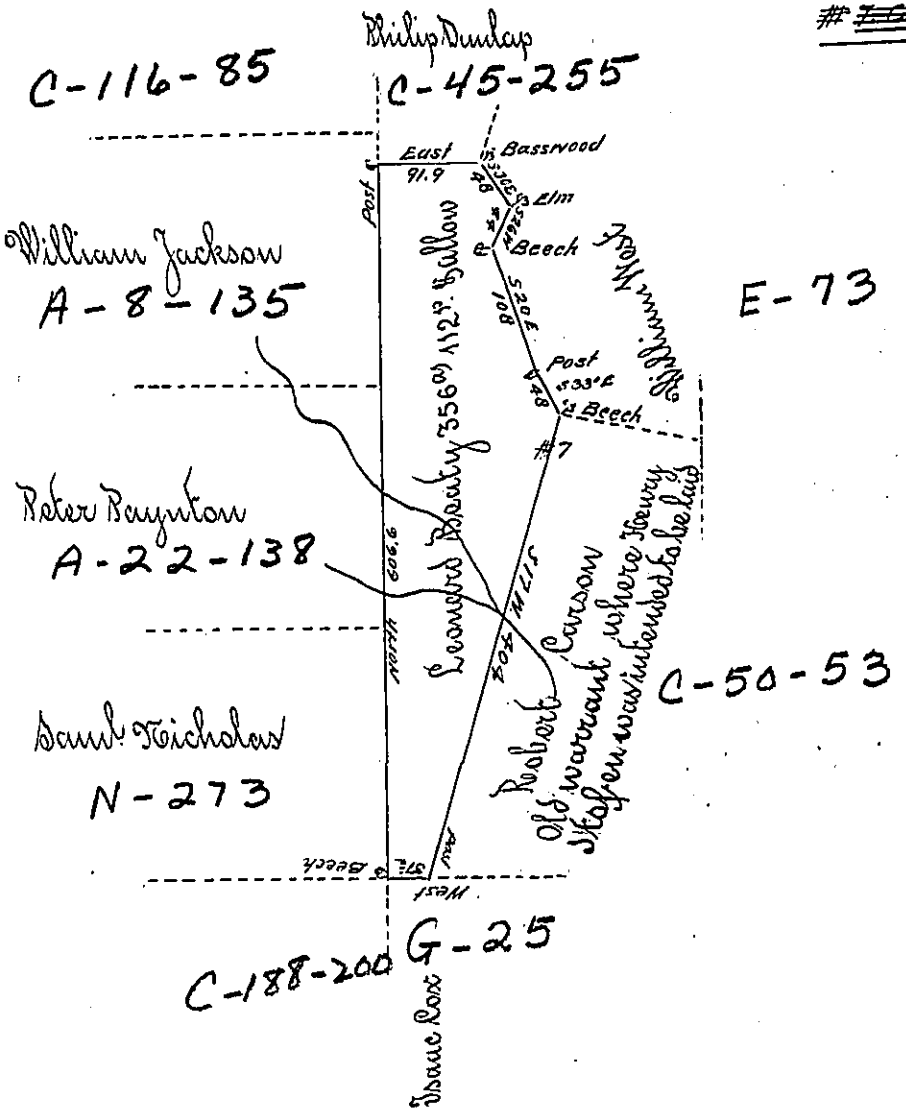


By *Ed D. D.*



A Draught of a tract of land situate on the North branch of the Mialising Creek in the Township of Rush Susquehanna County, containing three hundred and fifty six acres and one hundred & twelve perches and allowance of six per cent for roads surveyed the 12<sup>th</sup> day of November 1815, in pursuance of a Warrant Dated the 31<sup>st</sup> day of December 1793

by Jonathan Stevens D.S.

Examined and approved of this twentieth day of November A.D. 1835

Jacob Spangler Esq.  
Surveyor General

Ed. Olmstead } D.S.

IN TESTIMONY that the above is a copy of the original remaining on file in the Department of Internal Affairs of Pennsylvania, made conformably to an Act of Assembly approved the 16th day of February, 1833, I have hereunto set my Hand and caused the Seal of said Department to be affixed at Harrisburg, this eight day of February 1904.

*George P. Brown*  
Secretary of Internal Affairs.